

S2 SERIES PRODUCT SPECIFICATION

Indoor Ultra-thin Double-side LED Display



Key Features:

- Double-Side Display
- High Safety
- Lightweight Structure
- Energy-saving

Double-sided High-definition display



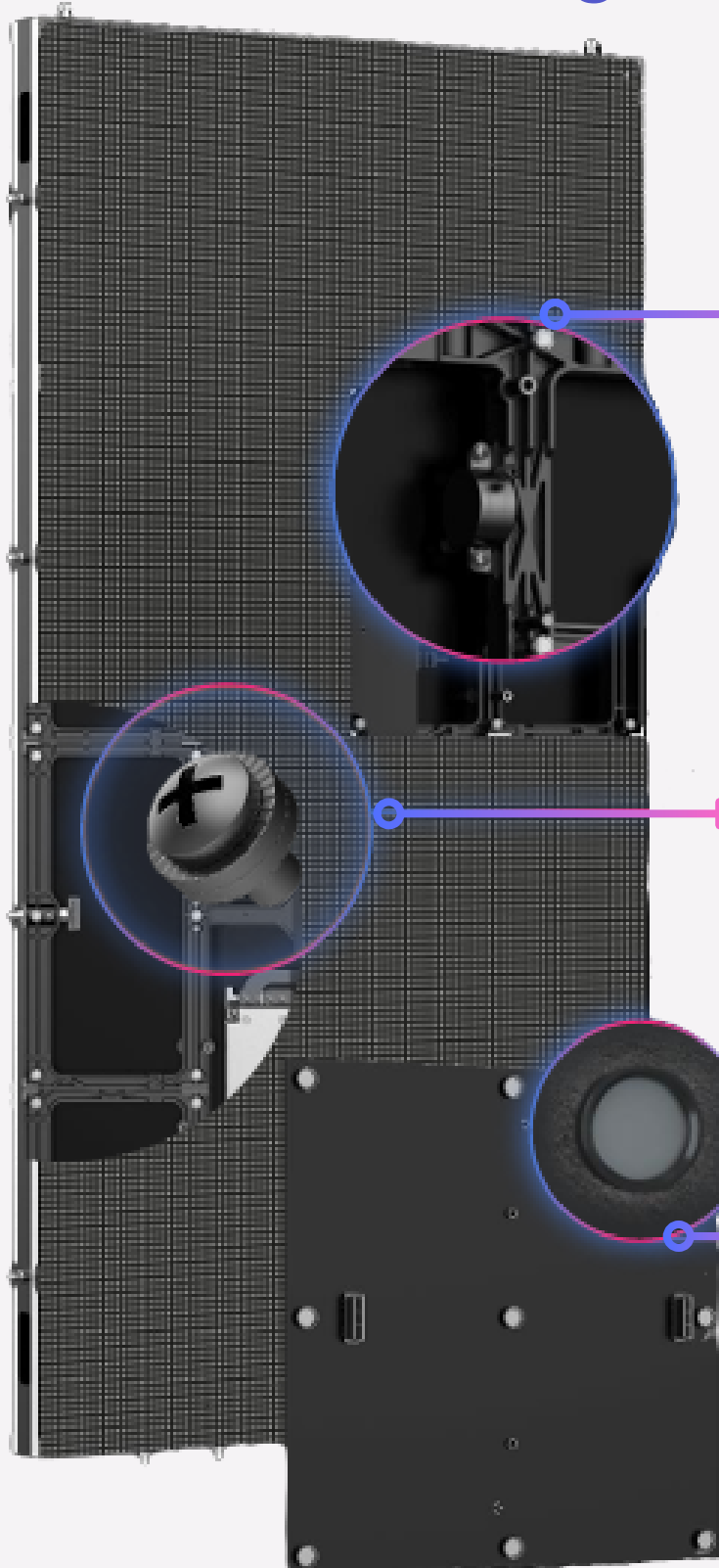
Display Independently

- ✓ Different Pixel Pitch
- ✓ Different Content
- ✓ Different Brightness

High-Performance Display

- ✓ 800 - 3000 nits
- ✓ 3840 - 7680Hz high fresh rate

High safety



Anti-Falling Design

Stretchable safety rope prevent modules from falling

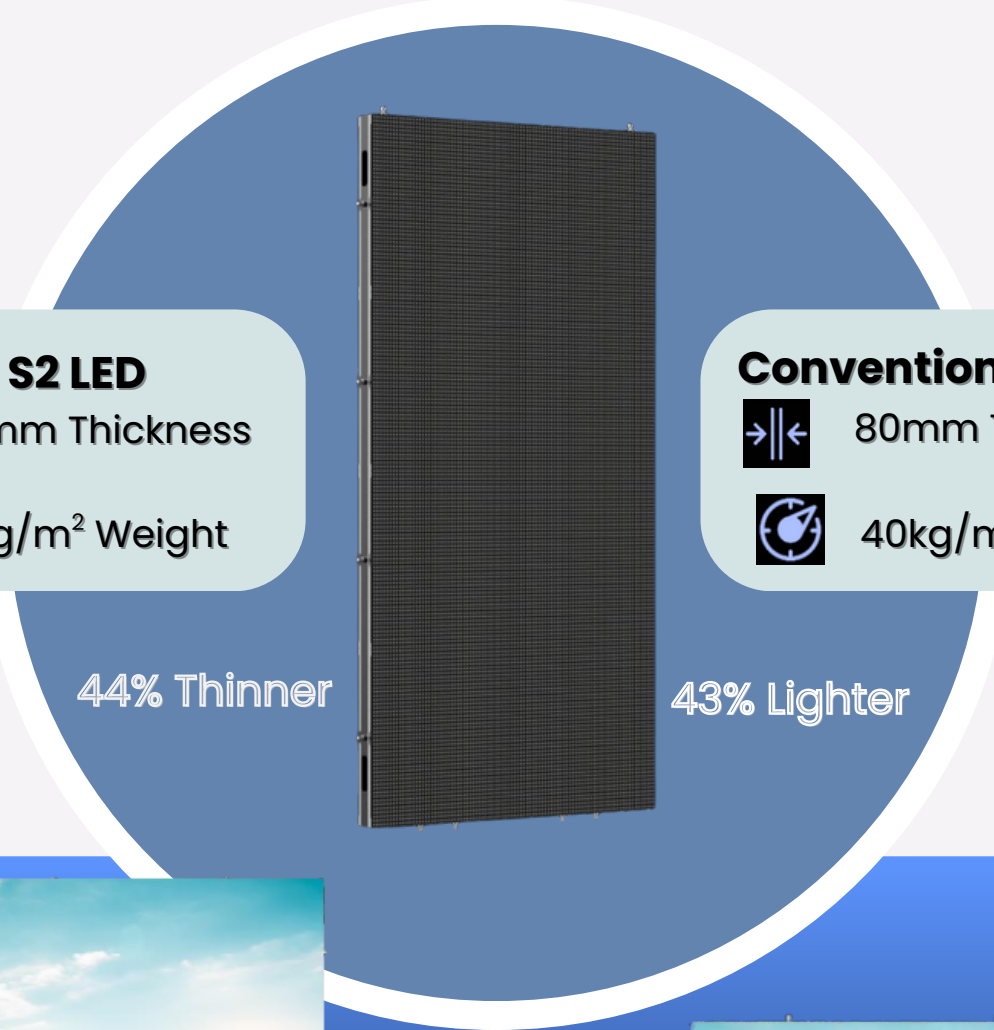
Anti-Vibration Design

Wedge washers to prevent screws from loosing caused by vibration.


Anti-Dust Design

Effectively prevent dust remains on the module surface, keep module surface clean (dirt-proof)
Avoid gathered dust damaging the LEDs.

Ultra-Light & Ultra-Thin




S2 LED

 48.2mm Thickness

 23kg/m² Weight

Conventional Indoor LED

 80mm Thickness

 40kg/m² Weight

44% Thinner

43% Lighter








500mm x 1000mm

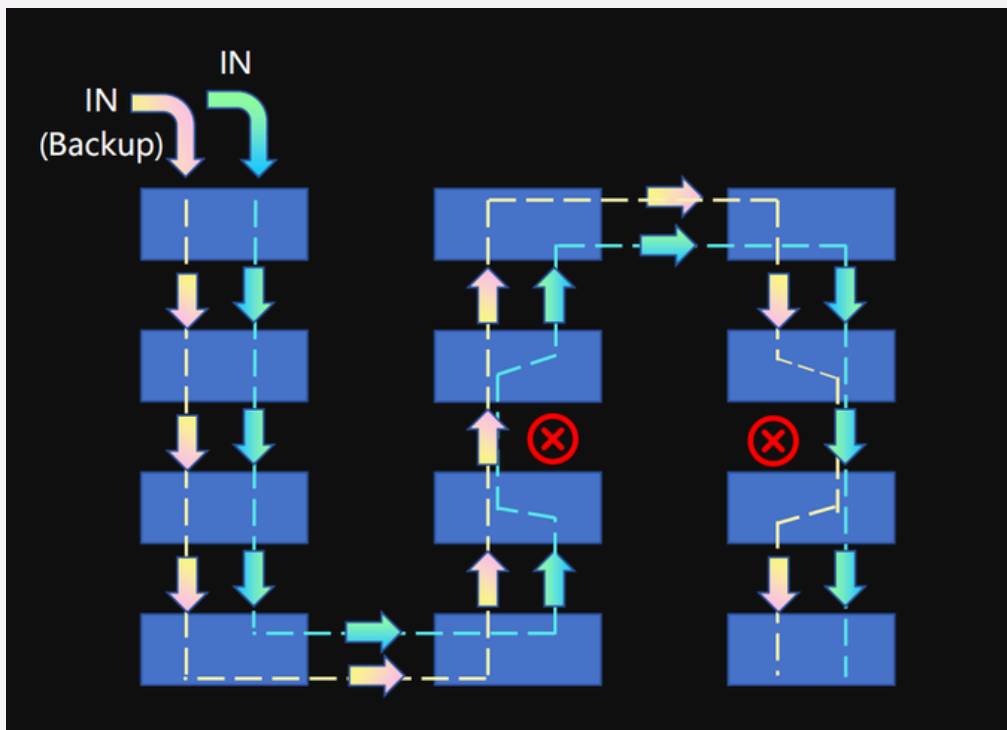


500mm x 500mm

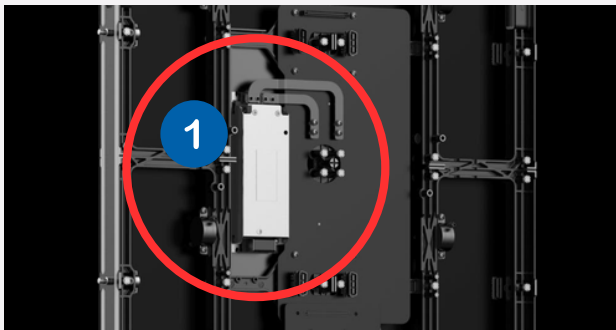
Power & Signal Dual Backup

Manage operating status to safeguard mission-critical task.

-  Spot Check*
-  Temperature Detection
-  Voltage Detection
-  Signal Connection Detection
-  Flash IC



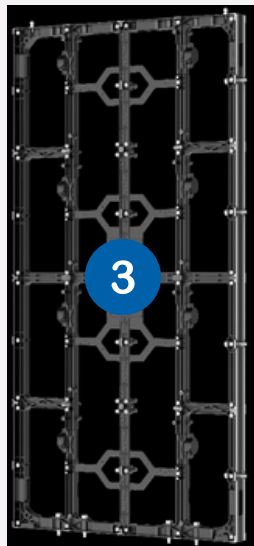
Fast Heat Dissipation



1 The **Power Supply** stick up to the metal board.



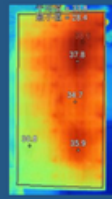
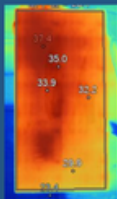
2 The **side holes** help internal air circulation.



3 **Die-casting cabinet makes** heat conduction faster.

Tested under 100% brightness in video play.

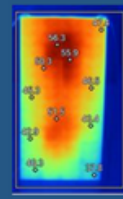
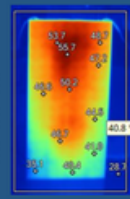
Max: 37.4°C
Average: 32.8°C
Min: 28.1°C



Max: 38.6°C
Average: 33.8°C
Min: 28.4°C

Tested under 100% brightness in full white.

Max: 56.4°C
Average: 39.6°C
Min: 27.2°C



Max: 56.4°C
Average: 39.6°C
Min: 27.2°C

Overcurrent Protection & Energy Saving





Module overcurrent protection
Fuse on module to avoid excessive current



Current surge protection
Delay startup between cabinets to reduce current surge



34% consumption less than conventional products



Common cathode design



One-click sleep mode 10W/m²

1000 nits, light up for 18 hours, conventional product (500W/m²), Uslim S2 (330W/m²)

Application

TRANSPORTATION

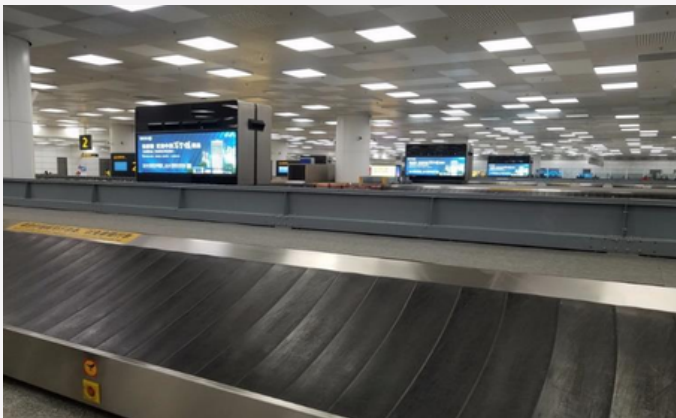


Waiting Room

RETAIL & MALL



Shopping Mall



Luggage Claim Area



Retail



S2 Series

Specification

| Series | S2 LED | | |
|--|--|-----|-----|
| Pixel Pitch | 1.8 | 2.5 | 3.9 |
| Cabinet Size | 500 x 1000 x 48.2mm | | |
| Cabinet Weight | 11.5kg / Panel | | |
| Brightness | 800 1000 nits | | |
| Power Consumption (Max) / (Average) | 450W/m ² 150W/m ² | | |
| Contrast Ratio | 5000:1 | | |

Note:

1. The product image shown is for illustrative purposes only. Actual product may vary in appearance, color, size, and other aspects.

2. The listed specifications are for reference only. Some values are based on tests conducted in a controlled internal laboratory environment. Actual performance may vary slightly depending on factors such as product batch, configuration, software version, usage conditions, and environmental influences.